

108°25.000' W

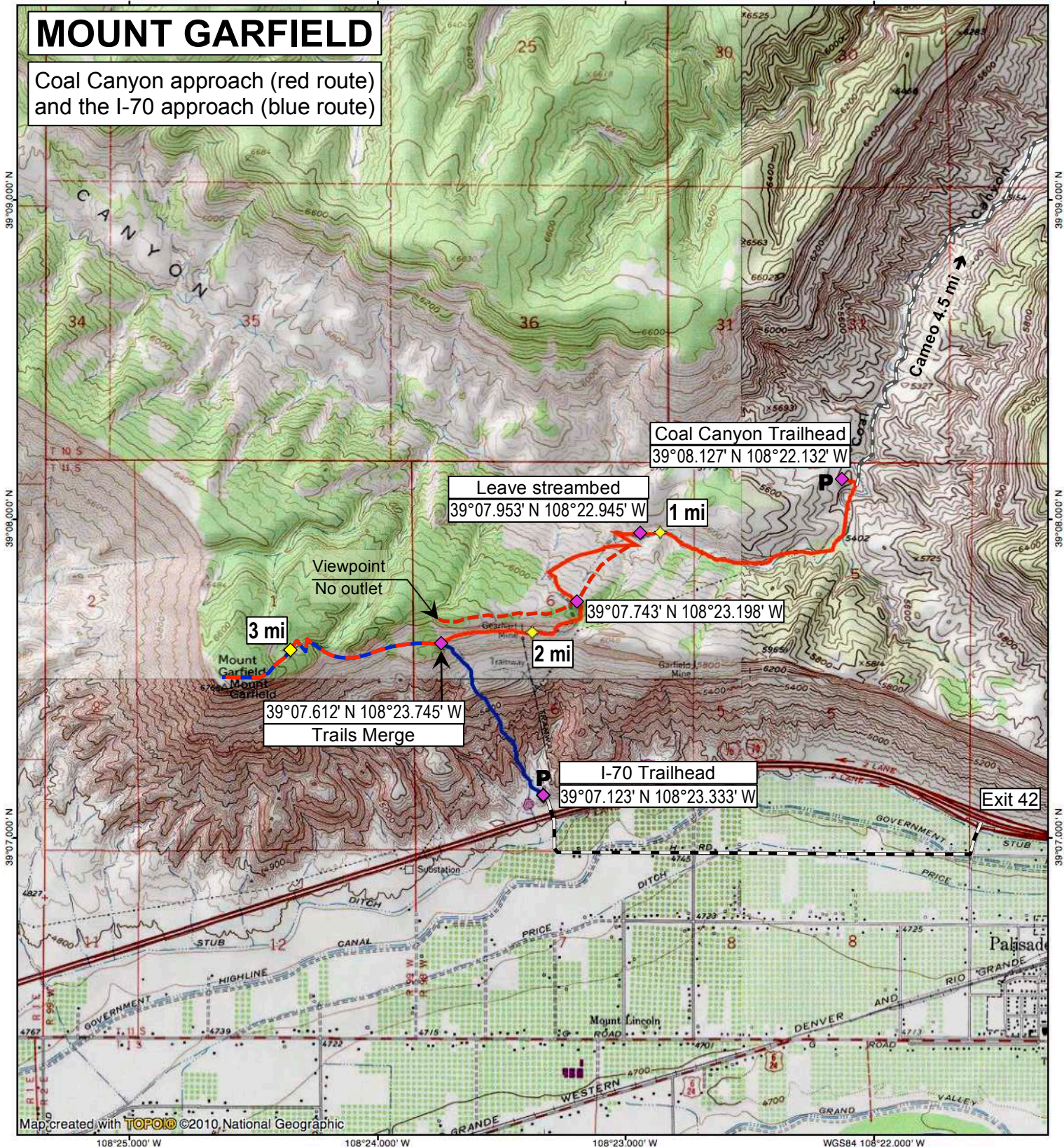
108°24.000' W

108°23.000' W

WGS84 108°22.000' W

# MOUNT GARFIELD

Coal Canyon approach (red route)  
and the I-70 approach (blue route)



Map created with TOPO! ©2010 National Geographic

108°25.000' W

108°24.000' W

108°23.000' W

WGS84 108°22.000' W

