

106°39.000' W

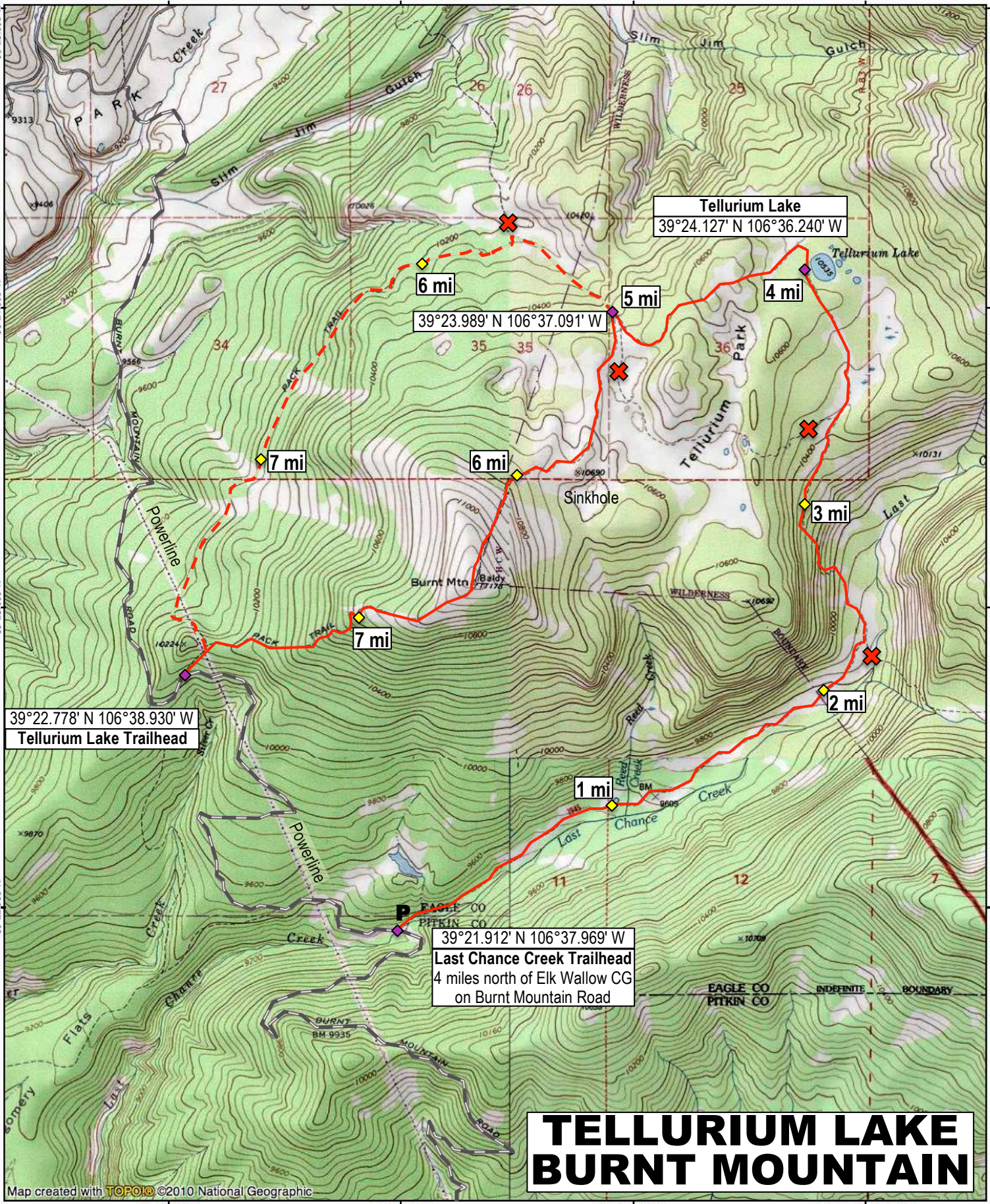
106°38.000' W

106°37.000' W

WGS84 106°36.000' W

39°25.000' N
39°24.000' N
39°23.000' N
39°22.000' N

39°25.000' N
39°24.000' N
39°23.000' N
39°22.000' N



Tellurium Lake
39°24.127' N 106°36.240' W

6 mi

39°23.989' N 106°37.091' W

5 mi

4 mi

7 mi

6 mi

3 mi

7 mi

2 mi

39°22.778' N 106°38.930' W
Tellurium Lake Trailhead

1 mi

39°21.912' N 106°37.969' W
Last Chance Creek Trailhead
4 miles north of Elk Wallow CG
on Burnt Mountain Road

TELLURIUM LAKE BURNT MOUNTAIN

Map created with TOPO! ©2010 National Geographic

106°39.000' W

106°38.000' W

106°37.000' W

WGS84 106°36.000' W

