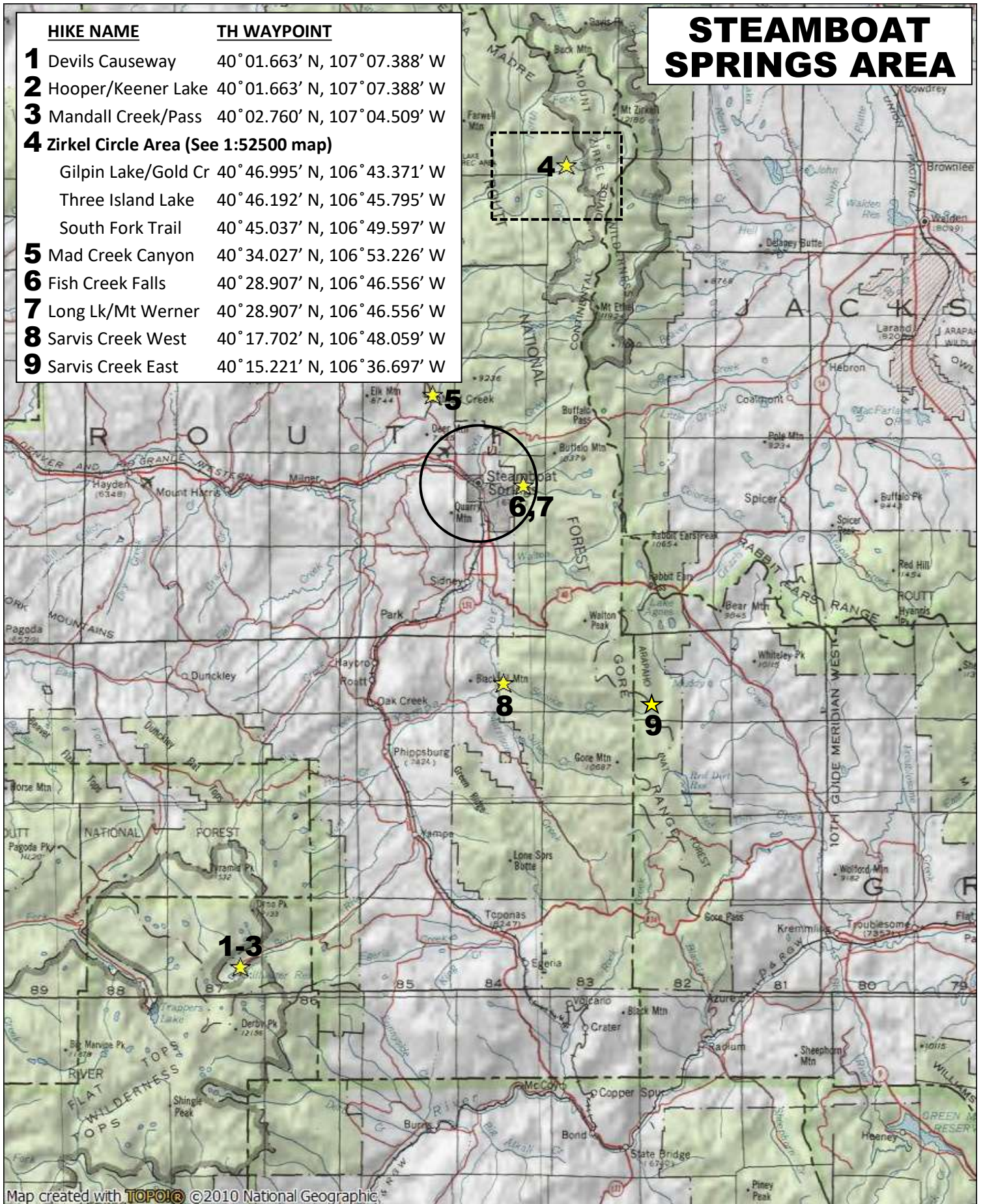


STEAMBOAT SPRINGS AREA

HIKE NAME

TH WAYPOINT

- 1** Devils Causeway 40° 01.663' N, 107° 07.388' W
- 2** Hooper/Keener Lake 40° 01.663' N, 107° 07.388' W
- 3** Mandall Creek/Pass 40° 02.760' N, 107° 04.509' W
- 4** Zirkel Circle Area (See 1:52500 map)
 Gilpin Lake/Gold Cr 40° 46.995' N, 106° 43.371' W
 Three Island Lake 40° 46.192' N, 106° 45.795' W
 South Fork Trail 40° 45.037' N, 106° 49.597' W
- 5** Mad Creek Canyon 40° 34.027' N, 106° 53.226' W
- 6** Fish Creek Falls 40° 28.907' N, 106° 46.556' W
- 7** Long Lk/Mt Werner 40° 28.907' N, 106° 46.556' W
- 8** Sarvis Creek West 40° 17.702' N, 106° 48.059' W
- 9** Sarvis Creek East 40° 15.221' N, 106° 36.697' W



Map created with **TOPOIQ** ©2010 National Geographic

SCALE = 1:500000

