

107°19.000' W

107°18.000' W

107°17.000' W

WGS84 107°16.000' W

BRADERICH CREEK

39°14.000' N

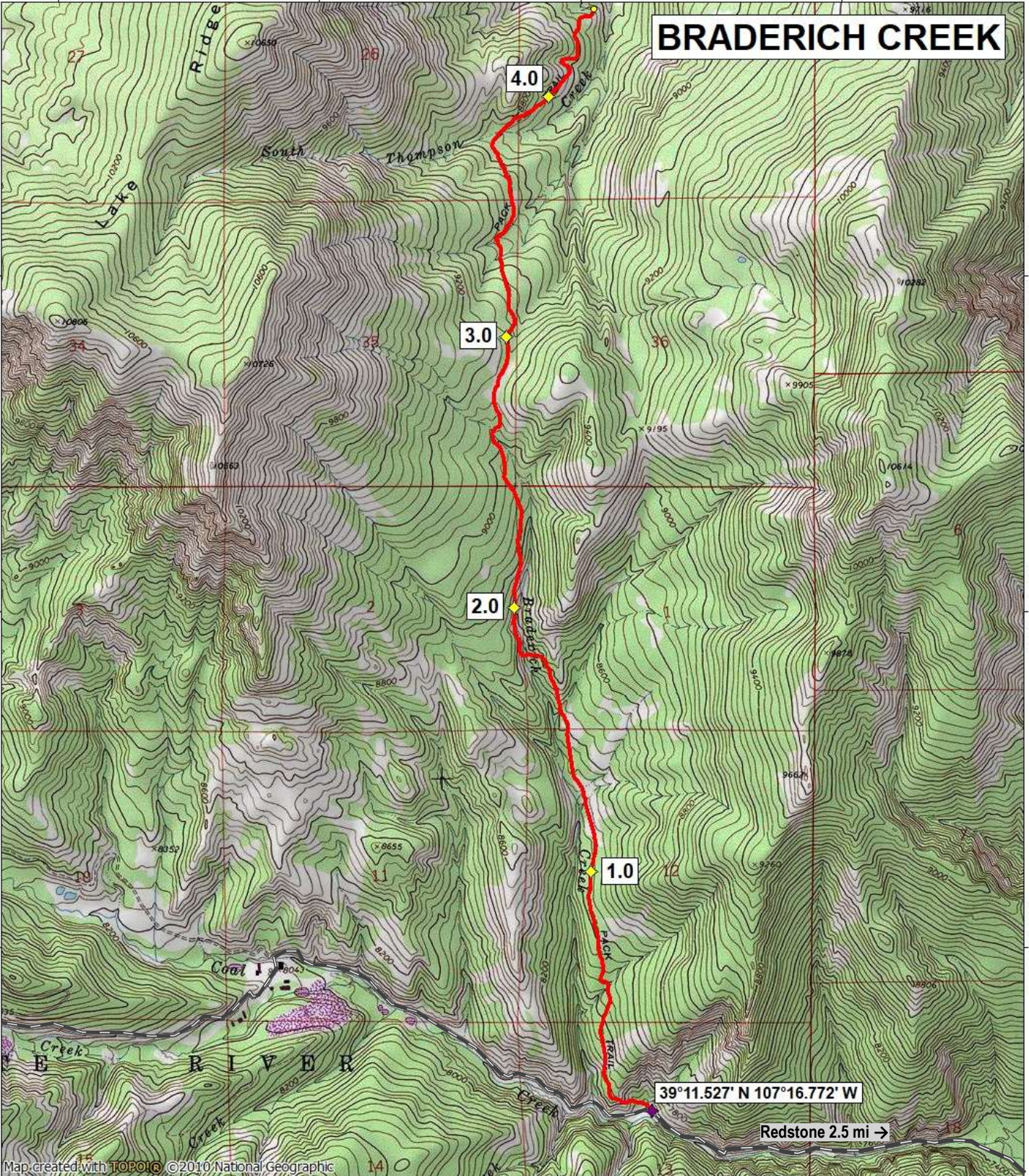
39°14.000' N

39°13.000' N

39°13.000' N

39°12.000' N

39°12.000' N



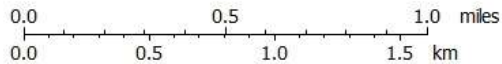
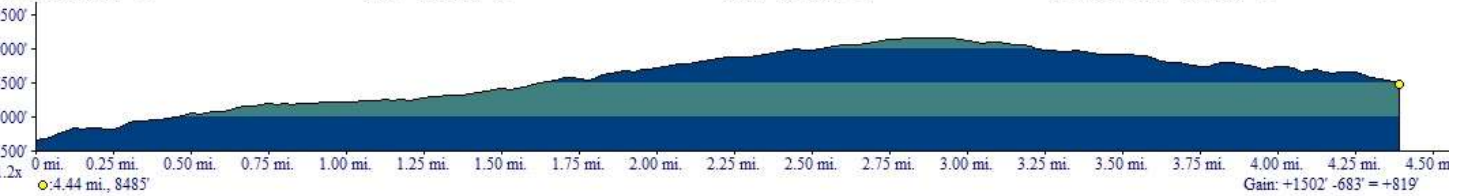
Map created with **TOPOIC** ©2010 National Geographic

107°19.000' W

107°18.000' W

107°17.000' W

WGS84 107°16.000' W



TN ↑ MN
9°
01/05/20