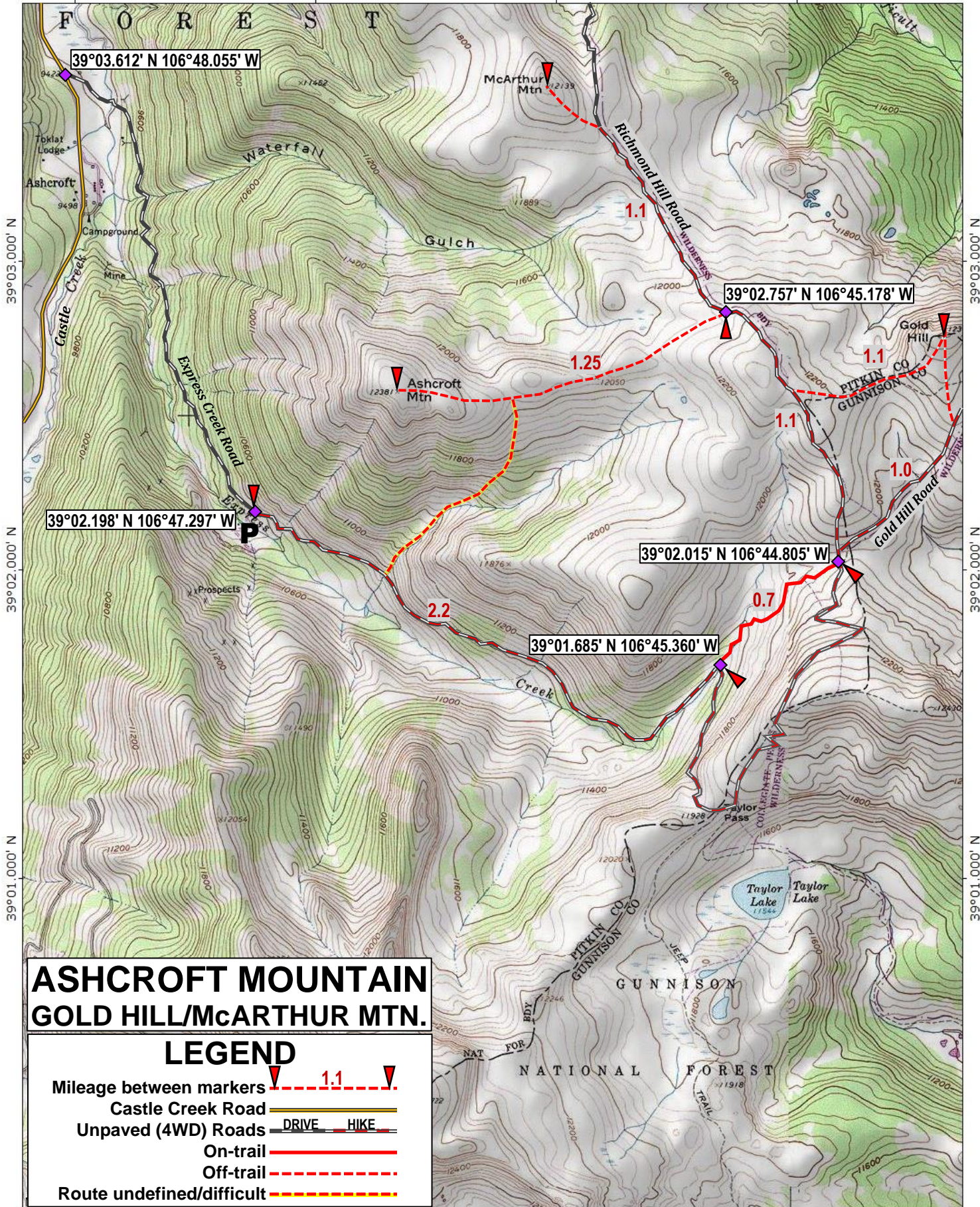


106°48.000' W 106°47.000' W 106°46.000' W WGS84 106°45.000' W



39°03.000' N
39°02.000' N
39°01.000' N

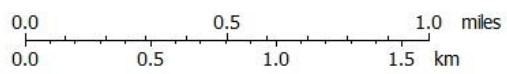
39°03.000' N
39°02.000' N
39°01.000' N

ASHCROFT MOUNTAIN GOLD HILL/McARTHUR MTN.

LEGEND

- Mileage between markers 1.1
- Castle Creek Road
- Unpaved (4WD) Roads DRIVE HIKE
- On-trail
- Off-trail
- Route undefined/difficult

106°48.000' W 106°47.000' W 106°46.000' W WGS84 106°45.000' W



TN MN
8 1/2°
01/04/20