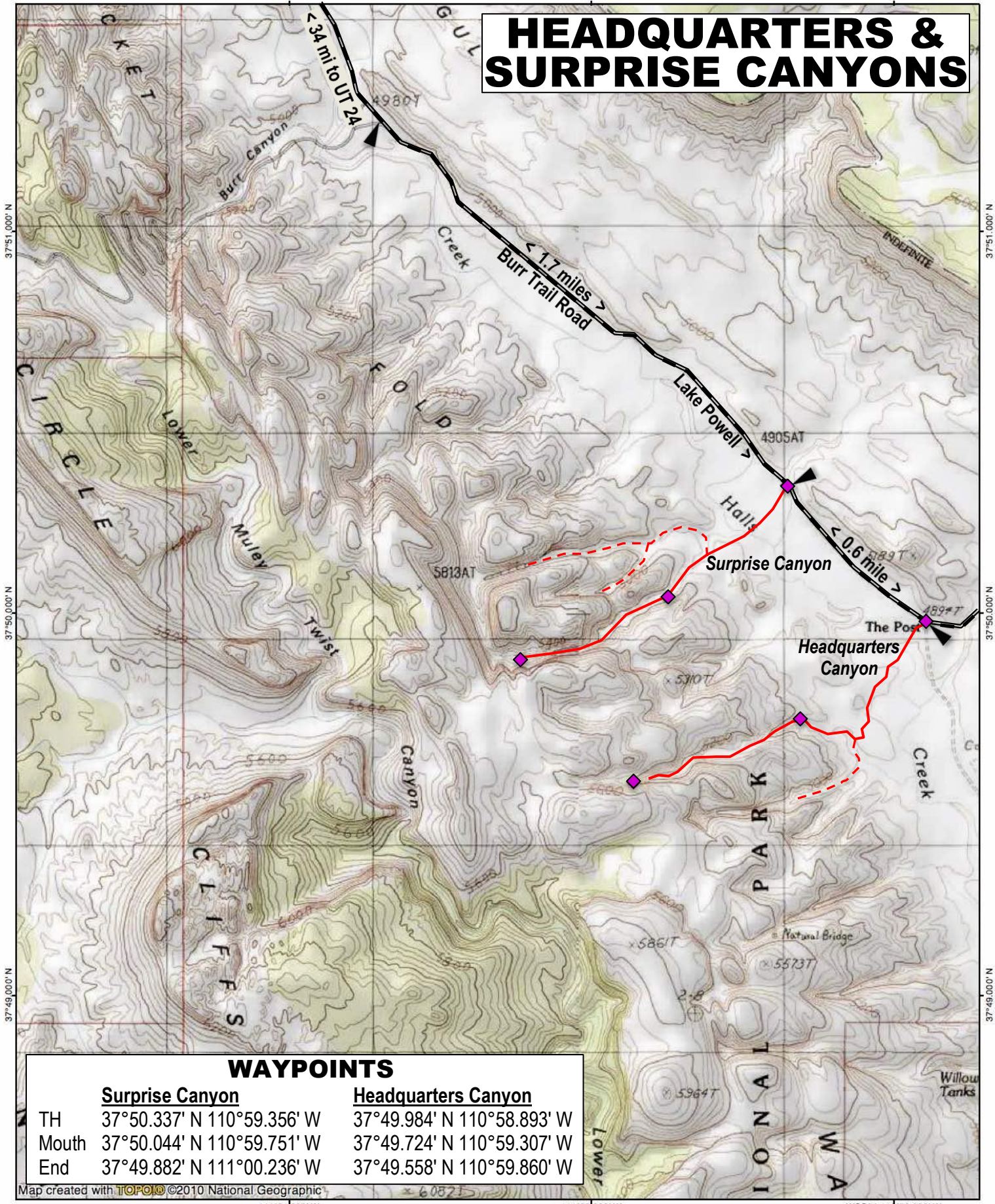


HEADQUARTERS & SURPRISE CANYONS



WAYPOINTS

	<u>Surprise Canyon</u>	<u>Headquarters Canyon</u>
TH	37°50.337' N 110°59.356' W	37°49.984' N 110°58.893' W
Mouth	37°50.044' N 110°59.751' W	37°49.724' N 110°59.307' W
End	37°49.882' N 111°00.236' W	37°49.558' N 110°59.860' W

Map created with TOPO! ©2010 National Geographic



SCALE = 1:24000

