

111°07.000' W

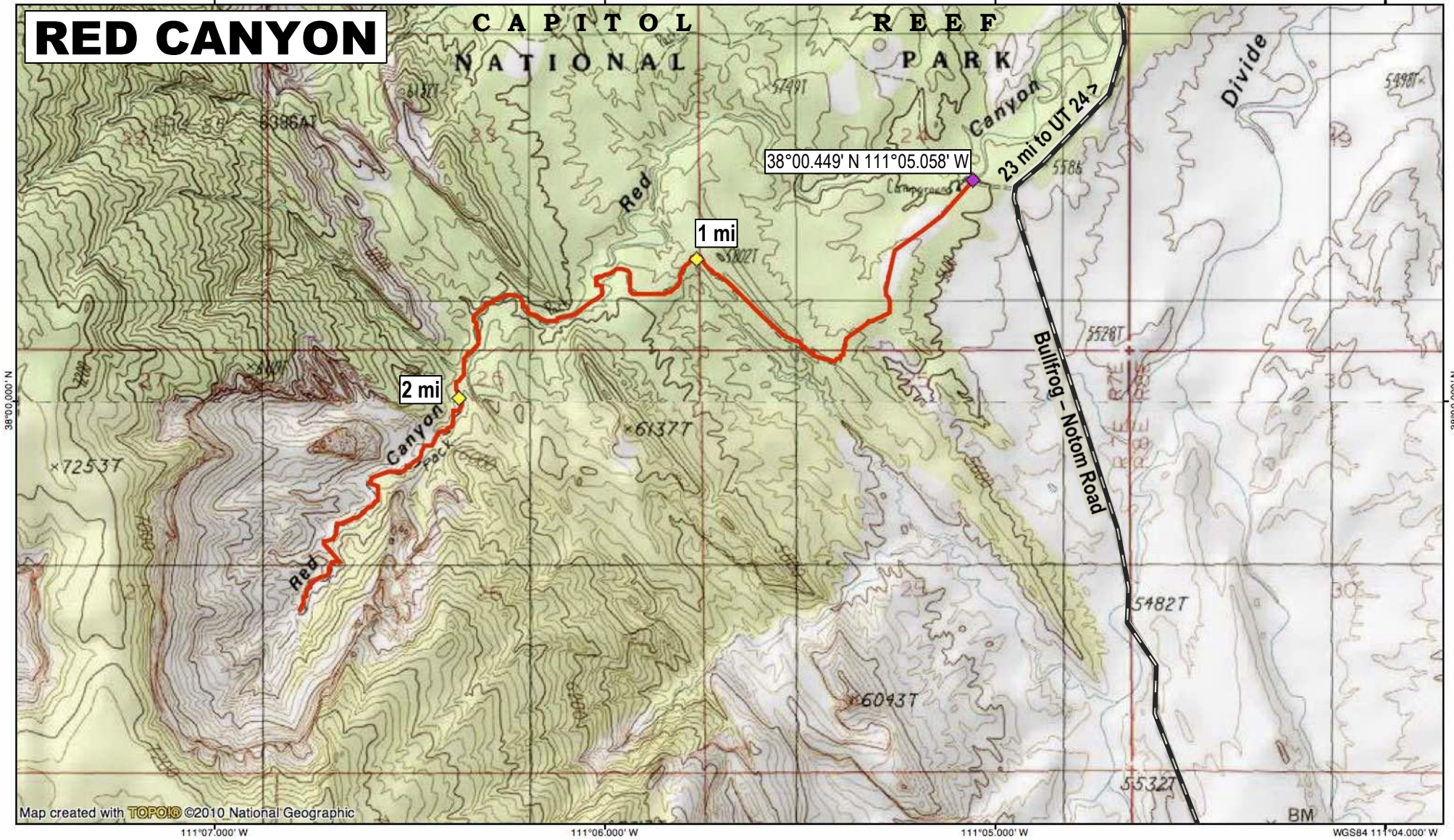
111°06.000' W

111°05.000' W

WGS84 111°04.000' W

# RED CANYON

## CAPITOL REEF NATIONAL PARK



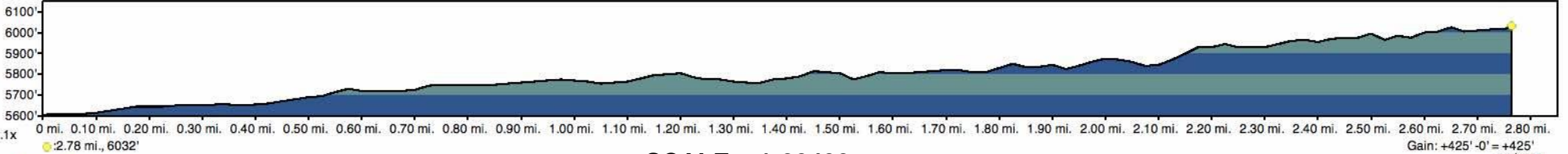
Map created with TOPO! ©2010 National Geographic

111°07.000' W

111°06.000' W

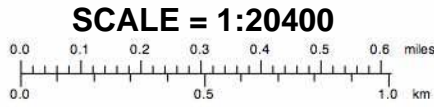
111°05.000' W

WGS84 111°04.000' W



2.1x  
● 2.78 mi., 6032'

Gain: +425' -0' = +425'



TN + MN

10.5°

11/18/16