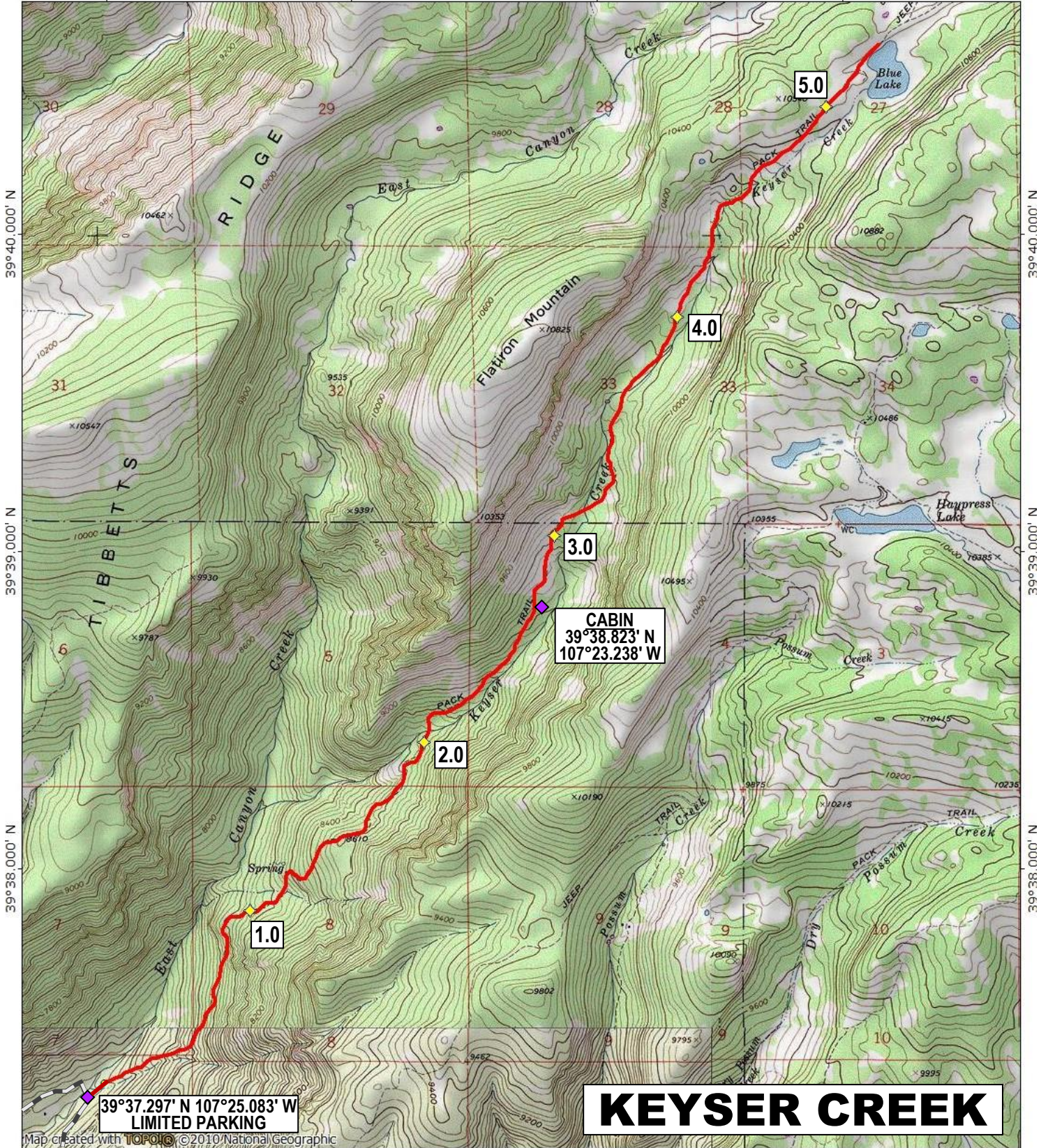


107°25.000' W

107°24.000' W

107°23.000' W

WGS84 107°22.000' W



39°40.000' N

39°39.000' N

39°38.000' N

39°40.000' N

39°39.000' N

39°38.000' N

39°37.297' N 107°25.083' W
LIMITED PARKING

CABIN
39°38.823' N
107°23.238' W

KEYSER CREEK

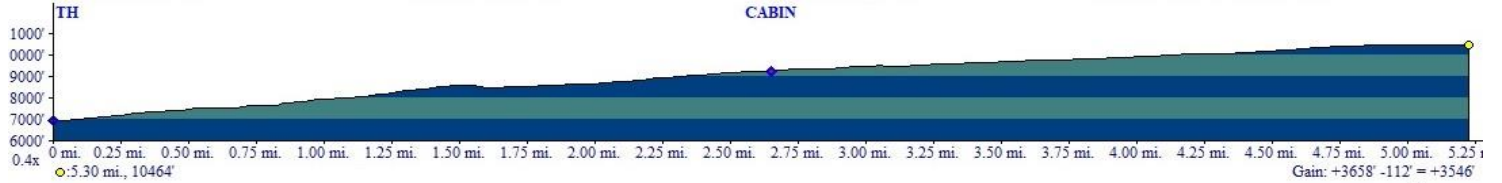
Map created with TOPO! © 2010 National Geographic

107°25.000' W

107°24.000' W

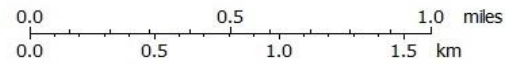
107°23.000' W

WGS84 107°22.000' W



0 mi. 0.25 mi. 0.50 mi. 0.75 mi. 1.00 mi. 1.25 mi. 1.50 mi. 1.75 mi. 2.00 mi. 2.25 mi. 2.50 mi. 2.75 mi. 3.00 mi. 3.25 mi. 3.50 mi. 3.75 mi. 4.00 mi. 4.25 mi. 4.50 mi. 4.75 mi. 5.00 mi. 5.25 mi.

Gain: +3658' -112' = +3546'



TN/MN
9°
06/17/20