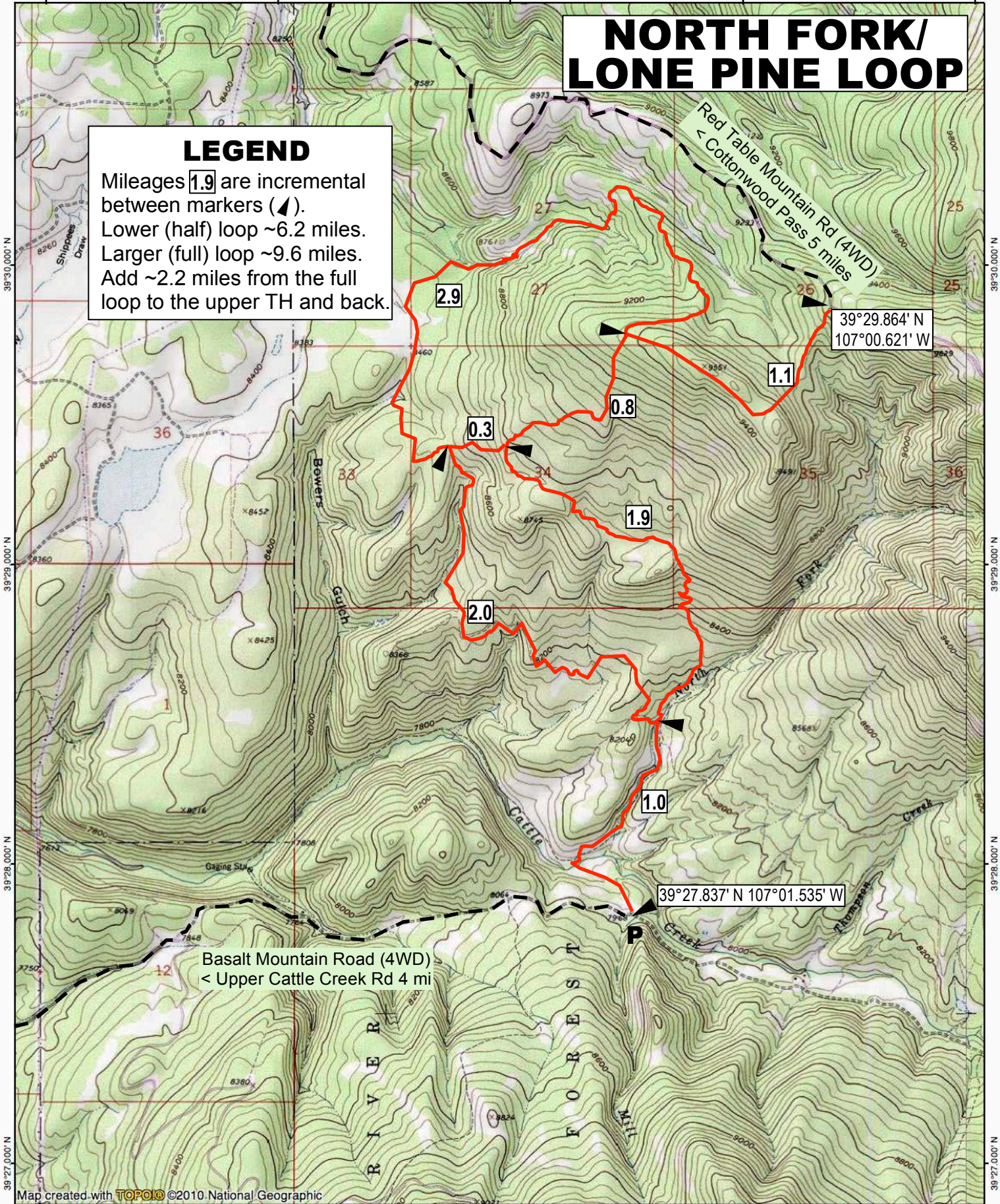


# NORTH FORK/ LONE PINE LOOP

## LEGEND

Mileages **1.9** are incremental between markers (▲).  
 Lower (half) loop ~6.2 miles.  
 Larger (full) loop ~9.6 miles.  
 Add ~2.2 miles from the full loop to the upper TH and back.



39°29.864' N  
107°00.621' W

39°27.837' N 107°01.535' W

Basalt Mountain Road (4WD)  
< Upper Cattle Creek Rd 4 mi