

111°28.000' W

111°27.000' W

WGS84 111°26.000' W

BIGHORN CANYON

LEGEND

- Bighorn Canyon Loop —
- West Fork Bighorn Canyon —
- Harris Wash Approach —

DRIVING DIRECTIONS

To reach the upper (Spencer Flat) TH take UT 12 east from Escalante. Just past mile marker 70, turn right (south) on Spencer Flat Road and drive 1.8 miles to a parking area on the left.

To reach the lower (Harris Wash) TH, take UT 12 east from Escalante 5.4 miles to Hole-In-The-Rock (HITR) Road. Turn right on HITR Road and drive 4.5 miles to the Harris Wash TH on the left.

37°43.000' N

37°43.000' N

37°42.000' N

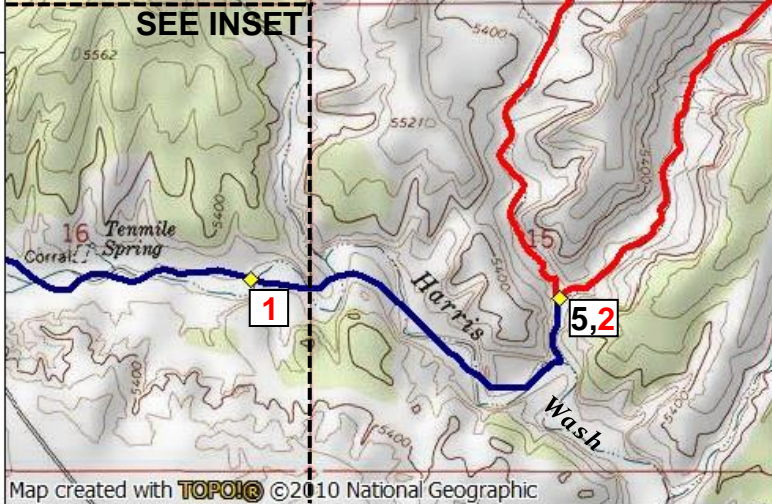
37°42.000' N

37°41.000' N

37°41.000' N

SEE INSET

INSET



Map created with **TOPOIC** ©2010 National Geographic

111°28.000' W

111°27.000' W

111°29.000' W

WGS84 111°28.000' W

