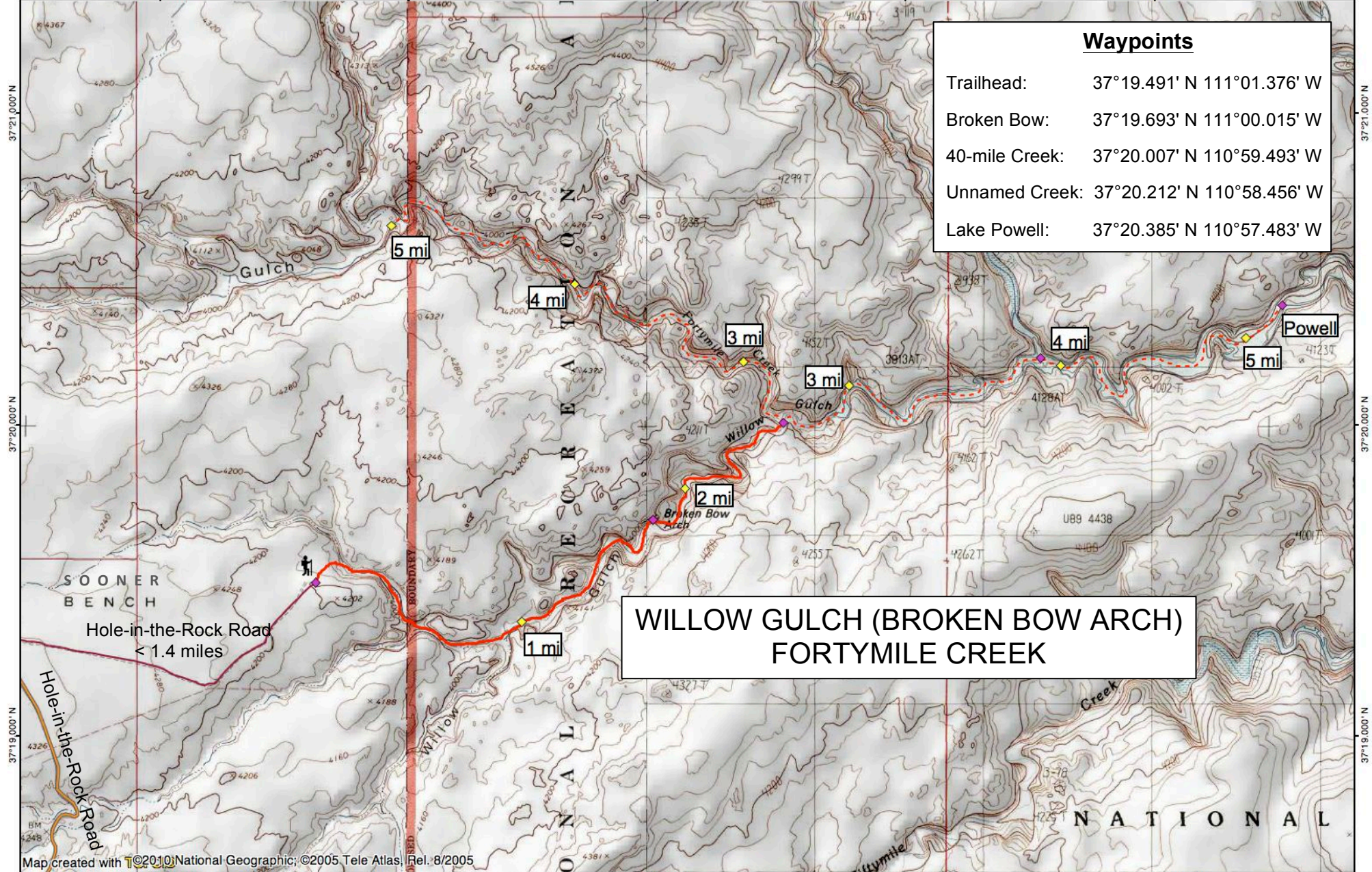


111°02.000' W      111°01.000' W      111°00.000' W      110°59.000' W      WGS84 110°58.000' W



<b>Waypoints</b>	
Trailhead:	37°19.491' N 111°01.376' W
Broken Bow:	37°19.693' N 111°00.015' W
40-mile Creek:	37°20.007' N 110°59.493' W
Unnamed Creek:	37°20.212' N 110°58.456' W
Lake Powell:	37°20.385' N 110°57.483' W

**WILLOW GULCH (BROKEN BOW ARCH)  
FORTYMILE CREEK**

Map created with ©2010 National Geographic; ©2005 Tele Atlas; Rel. 8/2005

111°02.000' W      111°01.000' W      111°00.000' W      110°59.000' W      WGS84 110°58.000' W

